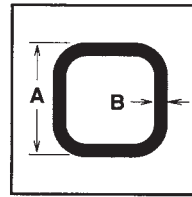


SQUARE TUBING

- A 513 (ORNAMENTAL SIZES)
 - A 500 (STRUCTURAL SIZES)
- STOCK LENGTHS: 20, 24, & 40 ft



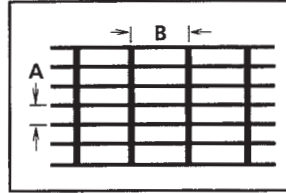
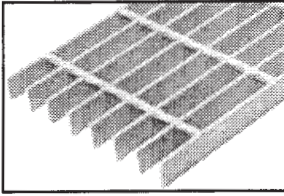
OUTSIDE DIMENSIONS	WALL THICKNESS	POUNDS PER FOOT	OUTSIDE DIMENSIONS	WALL THICKNESS	POUNDS PER FOOT
1/2 x 1/2	.049	.301	3 1/2 x 3 1/2	.120	5.610
	.065	.385		.188	8.150
5/8 x 5/8	.049	.384		.250	10.510
	.065	.495		.312	12.700
3/4 x 3/4	.049	.467	4 x 4	.375	14.720
	.065	.605		.120	6.460
	.083	.753		.188	9.420
	.120	1.028		.250	12.210
7/8 x 7/8	.065	.716		.312	14.830
				.375	17.270
1 x 1	.049	.634	4 1/2 x 4 1/2	.500	21.630
	.065	.827		.188	10.700
	.083	1.035		.250	13.910
	.095	1.169	5 x 5	.120	7.800
.120	1.436	.188		11.970	
1 1/4 x 1 1/4	.065	1.047		.250	15.620
	.083	1.317		.312	19.080
	.095	1.492		.375	22.370
	.120	1.884		.500	28.430
1 1/2 x 1 1/2	.188	2.400	6 x 6	.120	9.860
	.065	1.268		.188	14.530
	.095	1.815		.250	19.020
	.120	2.252		.312	23.340
	.188	3.350		.375	27.480
1 3/4 x 1 3/4	.250	4.000		.500	35.240
	.065	1.489	7 x 7	.188	17.080
	.095	2.138		.250	22.420
	.120	2.660		.312	27.590
		.375		32.580	
2 x 2				.500	42.050
	.065	1.170	8 x 8	.188	19.630
	.095	2.461		.250	25.820
	.120	3.050		.312	31.840
	.188	4.320		.375	37.690
.250	5.410	.500		48.850	
2 1/2 x 2 1/2				.625	59.320
	.120	3.900	10 x 10	.250	32.630
	.188	5.590		.312	40.350
	.250	7.110		.375	47.900
		.500		62.460	
3 x 3	.065	2.595	12 x 12	.250	39.430
	.095	3.518		.375	58.100
	.120	4.750		.500	76.070
	.188	6.870			
	.250	8.810			
	12.170				

B & B Surplus, Inc
Bakersfield
(661) 589-0381

B & B Steel Supply
Santa Maria
(805) 349-9991

B & B Metals, Inc
Santa Ana
(714) 541-7267

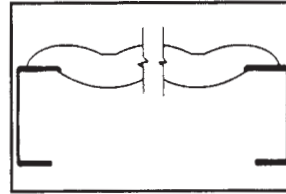
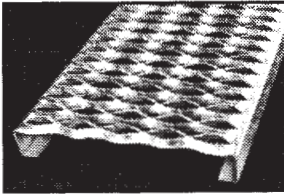
BAR GRATING



- WELDED CONSTRUCTION
- SMOOTH OR SERRATED
- FACTORY PRIMERED (BLACK) OR GALVANIZED
- * STOCK SIZE: 3 ft x 24 ft

BEARING BAR SIZE (INCHES)		TYPICAL DIMENSIONS A (INCHES) B	
$\frac{1}{8}$ X $\frac{3}{4}$	* $\frac{3}{16}$ X 1	$1\frac{3}{16}$	4
$\frac{1}{8}$ X 1	$\frac{3}{16}$ X $1\frac{1}{4}$		
$\frac{1}{8}$ X $1\frac{1}{4}$	$\frac{3}{16}$ X $1\frac{1}{2}$		
$\frac{1}{8}$ X $1\frac{1}{2}$	$\frac{3}{16}$ X $1\frac{3}{4}$		

GRIP STRUT

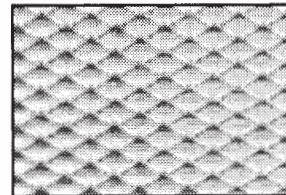


- 12 GAUGE GALVANIZED STEEL
- SERRATED NON-SLIP SURFACE
- LENGTH: 12 ft • HEIGHT: 2 in
- WIDTHS (inches): $4\frac{3}{4}$, 7, $9\frac{1}{2}$, $11\frac{3}{4}$, $18\frac{3}{4}$, 24

DOOR SCREEN

- $\frac{1}{8}$ - #24 FLAT EXPANDED
- STOCK SIZE: 3 ft x 7 ft

**IDEAL FOR
SECURITY
DOORS**

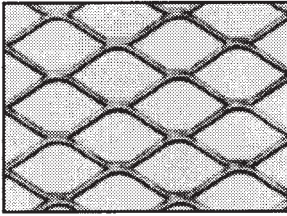


B & B Surplus, Inc
Bakersfield
(661) 589-0381

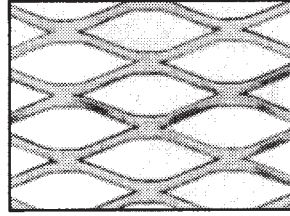
B & B Steel Supply
Santa Maria
(805) 349-9991

B & B Metals, Inc
Santa Ana
(714) 541-7267

EXPANDED METAL /GRATING



Standard



Flattened

STYLE DESIGNATION:

- The first number represents the nominal width of the opening in inches
- The second number represents the approximate material gauge before expanding

• EXPANDED • GRATING • CATWALK

STOCK SIZES: (Inches)

48 x 96, 48 x 120

60 x 96, 60 x 120

72 x 96, 72 x 120

STYLE	POUNDS PER 100 SQ. FT.	OPENING SIZE (INCHES)		STRAND SIZE (INCHES)		OVERALL THICK- NESS
		SHORT	LONG	WIDE	THICK	

EXPANDED - STANDARD

1/2 - #16	86	.375	.938	.077	.060	.175
1/2 - #13	147	.312	.938	.096	.092	.204
3/4 - #13	80	.750	1.688	.096	.092	.205
3/4 - #9	180	.688	1.562	.150	.134	.312
1 1/2 - #9	120	1.125	2.375	.144	.134	.312
1 1/2 - #6	250	1.110	2.313	.203	.198	.433

EXPANDED - FLATTENED

1/4 - #18	108	.075	.715	.080	.040	.040
1/2 - #16	82	.312	1.000	.096	.050	.050
1/2 - #13	140	.265	1.000	.107	.070	.070
3/4 - #13	75	.688	1.781	.106	.070	.070
3/4 - #9	171	.563	1.688	.165	.120	.120
1 1/2 - #9	114	1.000	2.563	.158	.110	.110

GRATING / CATWALK

3.0 LB	300	.940	3.44	.264	.183	.540
3.14 LB	314	1.625	4.88	.312	.250	.656
4.0 LB	400	.940	3.44	.300	.215	.618
4.27 LB	427	1.000	2.88	.300	.250	.625
5.0 LB	500	.813	3.38	.331	.250	.655

NOTE: All expanded metal dimensions and weights are approximate and subject to mill tolerance.

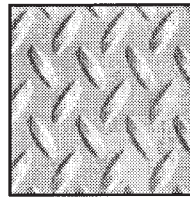
B & B Surplus, Inc
Bakersfield
(661) 589-0381

B & B Steel Supply
Santa Maria
(805) 349-9991

B & B Metals, Inc
Santa Ana
(714) 541-7267

FLOOR PLATE

• RAISED DIAMOND PATTERN



SIZE INCHES	POUNDS PER SHEET	SIZE INCHES	POUNDS PER SHEET	SIZE INCHES	POUNDS PER SHEET
14 Ga.		48 x 96	278.4	³/₈ INCH	
3.75 LBS per sq. ft.		120	348.0	16.35 LBS per sq. ft.	
		144	417.6		
36 x 96	90.0	60 x 96	348.0	36 x 96	392.4
120	112.5	120	435.0	120	490.5
144	135.0	144	522.0	144	588.6
48 x 96	120.0	72 x 96	417.6	48 x 96	523.2
120	150.0	120	252.0	120	654.0
144	180.0	144	626.4	144	784.8
12 Ga.		¹/₄ INCH		60 x 96	
5.25 LBS per sq. ft.		11.25 LBS per sq.ft.		120	
				144	
36 x 96	126.0	36 x 96	270.0	72 x 96	784.8
120	157.5	120	337.5	120	981.0
144	189.0	144	405.0	144	1177.2
48 x 96	168.0	48 x 96	360.0	¹/₂ INCH	
120	210.0	120	450.0	21.45 LBS per sq.ft.	
144	252.0	144	540.0		
60 x 96	210.0	60 x 96	450.0	48 x 96	686.4
120	262.5	120	562.5	120	858.0
144	315.0	144	675.0	144	1029.6
¹/₈ INCH		72 x 96	540.0	60 x 96	858.0
6.15 LBS per sq. ft.		120	675.0	120	1072.5
		144	810.0	144	1287.0
36 x 96	147.6	⁵/₁₆ INCH		72 x 96	1029.6
120	184.5	13.8 LBS per sq. ft.		120	1287.0
144	221.4			144	1544.4
48 x 96	196.8	36 x 96	331.2	⁵/₈ INCH	
120	246.0	120	414.0	26.55 LBS per sq.ft.	
144	295.2	144	496.8		
60 x 96	246.0	48 x 96	441.6	48 x 96	849.6
120	307.5	120	552.0	120	1062.0
144	369.0	144	662.4	72 x 96	1274.4
³/₁₆ INCH		60 x 96	552.0	120	1593.0
8.70 Lbs per sq. ft.		120	690.0	³/₄ INCH	
		144	828.0	31.65 LBS per sq.ft.	
36 x 96	208.8	72 x 96	662.4	60 x 96	1266.0
120	261.0	120	828.0	144	1899.0
144	313.2				

B & B Surplus, Inc
Bakersfield
(661) 589-0381

B & B Steel Supply
Santa Maria
(805) 349-9991

B & B Metals, Inc
Santa Ana
(714) 541-7267